

# EMERALD LAKES PHASES XIV & XV

BEING A REPLAT OF A PORTION OF TRACT 1, EMERALD LAKES AS RECORDED  
IN PLAT BOOK 9, PAGE 22 OF THE PUBLIC RECORDS OF MARTIN COUNTY  
FLORIDA, SECTION 25 & 36, TOWNSHIP 38 SOUTH, RANGE 41 EAST

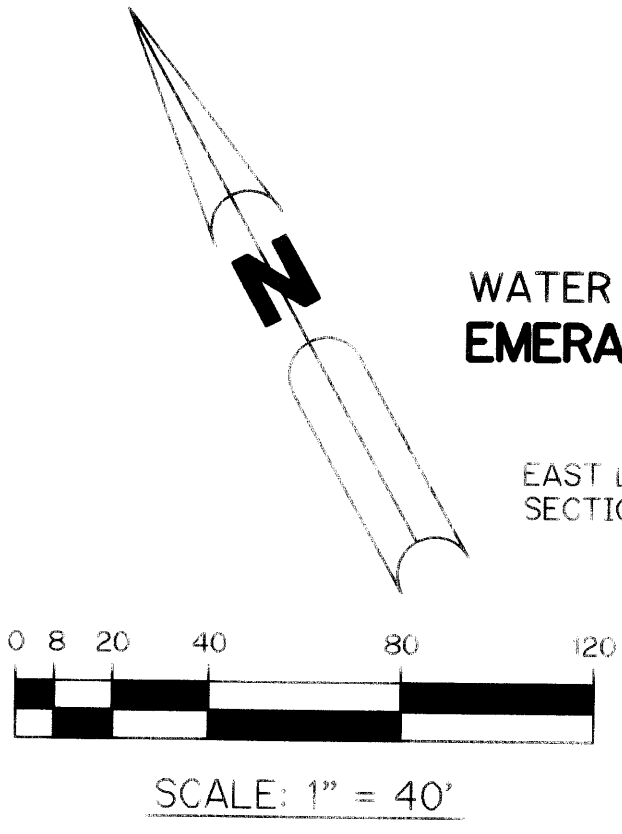
SHEET 2 OF 2 DECEMBER 6, 1994

I, MARSHA STILLER, CLERK OF THE CIRCUIT COURT OF MARTIN COUNTY  
FLORIDA, HEREBY CERTIFY THAT THIS PLAT WAS FILED FOR RECORD IN  
PLAT BOOK 19, PAGE 73, MARTIN COUNTY, FLORIDA, PUBLIC  
RECORDS THIS 17 DAY OF April, 1994

MARSHA STILLER, CLERK  
CIRCUIT COURT  
MARTIN COUNTY, FLORIDA

BY *Debra L. Smith*  
DEPUTY CLERK

FILE NO 1112531



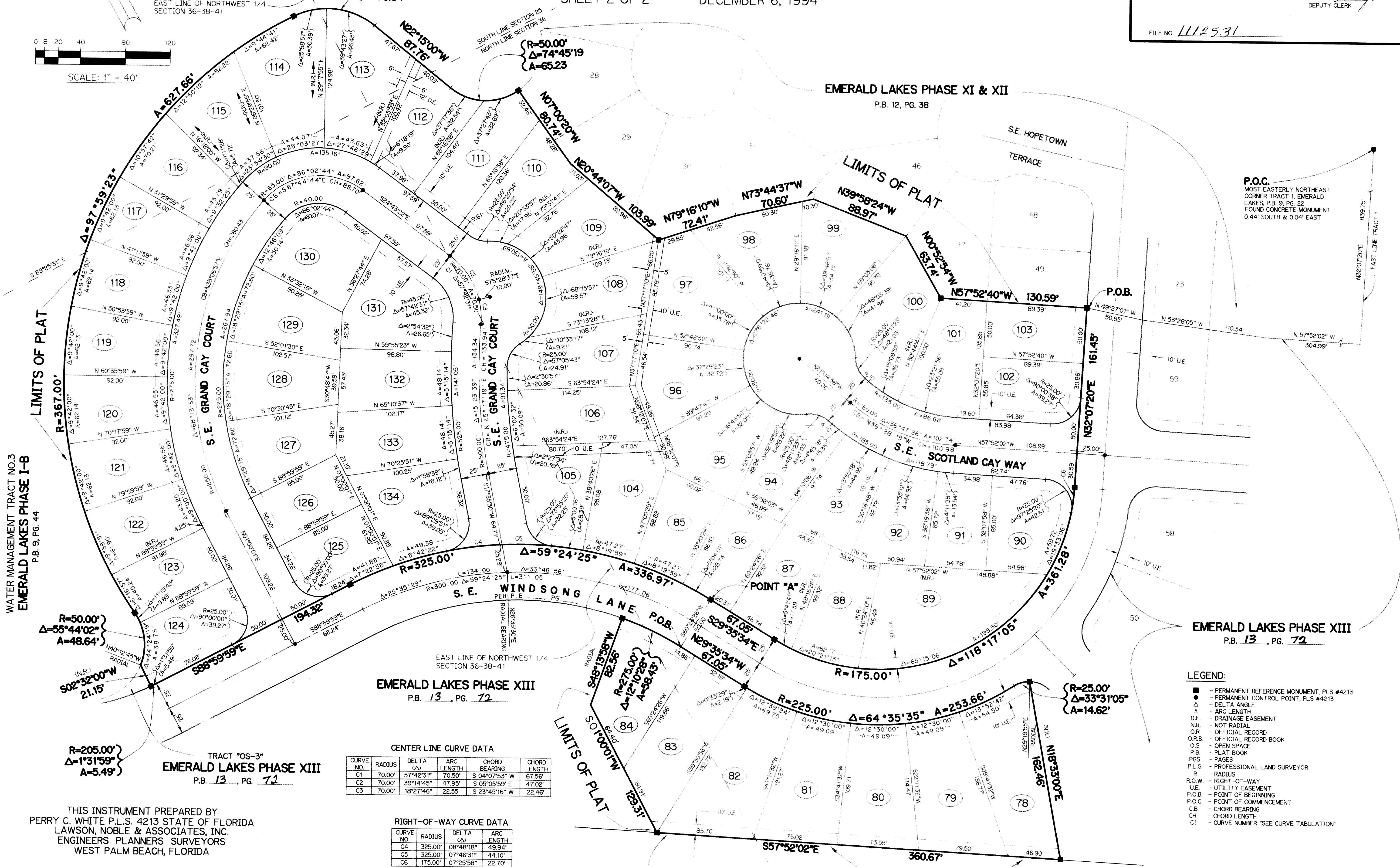
WATER MANAGEMENT TRACT NO.3  
EMERALD LAKES PHASE I-B  
P.B. 9, PG. 44  
EAST LINE OF NORTHWEST 1/4  
SECTION 36-38-41

$R=67.00'$   
 $\Delta=65^{\circ}42'24''$   
 $A=76.84'$

$R=50.00'$   
 $\Delta=74^{\circ}45'19''$   
 $A=65.23'$

EMERALD LAKES PHASE XI & XII  
P.B. 12, PG. 38

P.O.C.  
MOST EASTERLY NORTHEAST  
CORNER TRACT 1, EMERALD  
LAKES, P.B. 9, PG. 22  
FOUND CONCRETE MONUMENT  
0.44' SOUTH & 0.04' EAST



WATER MANAGEMENT TRACT NO.3  
EMERALD LAKES PHASE I-B  
P.B. 9, PG. 44

$R=50.00'$   
 $\Delta=55^{\circ}44'02''$   
 $A=48.64'$

$R=205.00'$   
 $\Delta=1^{\circ}31'59''$   
 $A=5.49'$

TRACT "OS-3"  
EMERALD LAKES PHASE XIII  
P.B. 13, PG. 72

EMERALD LAKES PHASE XIII  
P.B. 13, PG. 72

CENTER LINE CURVE DATA

CURVE NO.	RADIUS	DELTA (Δ)	ARC LENGTH	CHORD BEARING	CHORD LENGTH
C1	70.00'	57°42'31"	70.50'	S 04°07'53" W	67.56'
C2	70.00'	39°14'45"	47.95'	S 05°05'59" E	47.02'
C3	70.00'	18°27'46"	22.55'	S 23°45'16" W	22.46'

RIGHT-OF-WAY CURVE DATA

CURVE NO.	RADIUS	DELTA (Δ)	ARC LENGTH
C4	325.00'	08°48'18"	49.94'
C5	325.00'	07°46'31"	44.10'
C6	175.00'	07°25'58"	22.70'

- LEGEND:
- PERMANENT REFERENCE MONUMENT, PLS #4213
  - PERMANENT CONTROL POINT, PLS #4213
  - Δ DELTA ANGLE
  - A ARC LENGTH
  - D.E. DRAINAGE EASEMENT
  - NR. NOT RADIAL
  - O.R. OFFICIAL RECORD
  - O.R.B. OFFICIAL RECORD BOOK
  - O.S. OPEN SPACE
  - P.B. PLAT BOOK
  - PGS. PAGES
  - P.L.S. PROFESSIONAL LAND SURVEYOR
  - R RADIUS
  - R.O.W. RIGHT-OF-WAY
  - U.E. UTILITY EASEMENT
  - P.O.B. POINT OF BEGINNING
  - P.O.C. POINT OF COMMENCEMENT
  - CB CHORD BEARING
  - CH CHORD LENGTH
  - C1 CURVE NUMBER \*SEE CURVE TABULATION\*

THIS INSTRUMENT PREPARED BY  
PERRY C. WHITE P.L.S. 4213 STATE OF FLORIDA  
LAWSON, NOBLE & ASSOCIATES, INC.  
ENGINEERS PLANNERS SURVEYORS  
WEST PALM BEACH, FLORIDA